

# Valentine in the heart

Panneerselvam Arunkumar, Ramasamy Palanimuthu

Department of Cardiology, PSG Institute of Medical Sciences and Research, Peelamedu, Coimbatore, India

## Case report

A 45-year-old male with recent anterior wall infarction underwent coronary angiogram. His left coronary system showed insignificant stenosis with thrombus. Incidentally, the right coronary artery revealed a branch arising from the posterolateral left ventricular branch of right coronary artery (RCA) and anastomosing with the sinus nodal artery arising from the proximal RCA. This anastomosis gave a Valentines shaped heart to

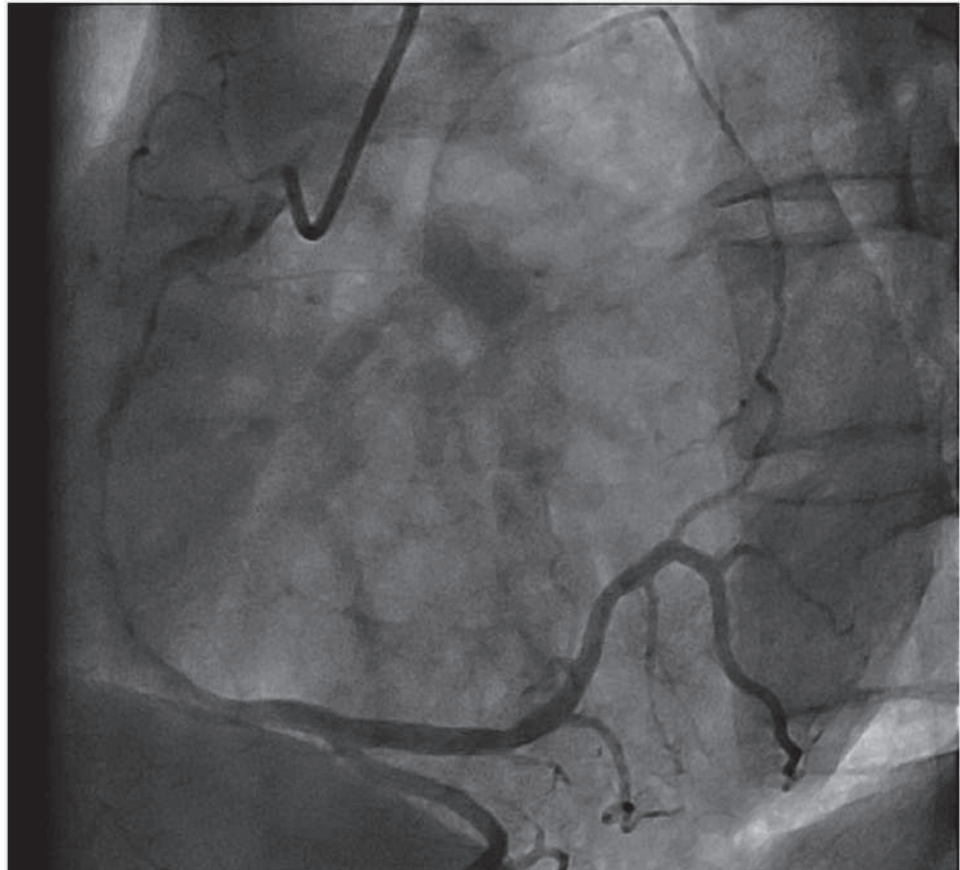
the coronary artery (fig. 1). This branch arising from distal RCA in the region of atrioventricular nodal artery has also been called “right posterior” sinus nodal artery. This dual blood supply SA node makes it relatively resistant to ischaemia.

## Reference

- 1 Gavaliatsis IP. “Right posterior” sinus node artery. *Int J Cardiol.* 2000;75:301–3.

### Figure 1

Right coronary angiogram demonstrating the communication between posterolateral LV branch of right coronary artery and SA nodal artery. This collateral circulation gives a heart shaped appearance to the right coronary circulation.



### Funding / potential competing interests:

No financial support and no other potential conflict of interest relevant to this article were reported.

### Correspondence:

Panneerselvam Arunkumar, MD  
Associate Professor of Cardiology  
PSG Institute of Medical Sciences & Research  
Peelamedu, Coimbatore  
India 641004  
drparun1976[at]gmail.com